

Quick Start Guide

R40

The R40 EEG Amplifier is a multi-channel electroencephalograph designed for use in routine EEG and lab monitoring applications. The R40 EEG Amplifier is intended to be connected to a PC which is powered from a medical-grade power supply or isolation transformer.

- Only use the PC authorised or supplied by Lifelines.
 - The user manual must be read before operating the equipment
 - The user manual can be found on the Lifelines Neuro website (<https://lifelinesneuro.com/eifu/R40>) or by scanning the QR code below. The host PC may be used to provide access to the electronic user manual. A hardcopy of the user manual can be requested, free of charge, by using the email contact address below.
- Free PDF reader software is available, if required, here: <https://get.adobe.com/reader/>
- Trackit software (version 2.4.1.7 onwards) supports the R40 EEG Amplifier and is available from your distributor or Lifelines. Check with them if a newer version is available (or use the email contact address below).
 - The software is supported on Microsoft Windows 10 and 11. Windows will automatically install the required USB drivers after connecting the amplifier to the PC for the first time.

Warnings and Cautions



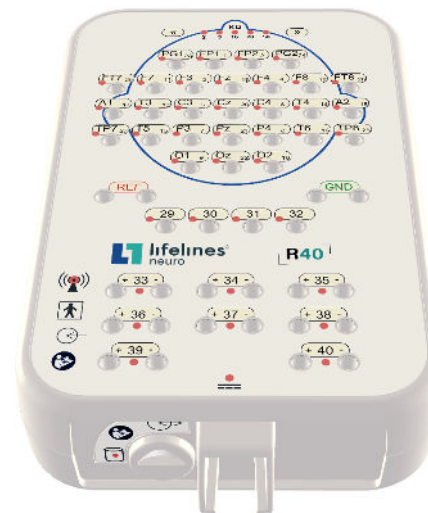
The R40 EEG Amplifier must only be used by a healthcare professional, within a hospital or clinical setting, who has the training and knowledge to undertake EEG examinations and is familiar with EEG equipment and practice. The User Manual must be read in its entirety before the equipment is used.



Do not modify this equipment without the authorization of the manufacturer.



Federal (USA) law restricts this device to sale by or on the order of a physician.



The R40 EEG Amplifier is supplied with:

- The R40 USB cable (3m).

