

QUICK START GUIDE



A Open the case

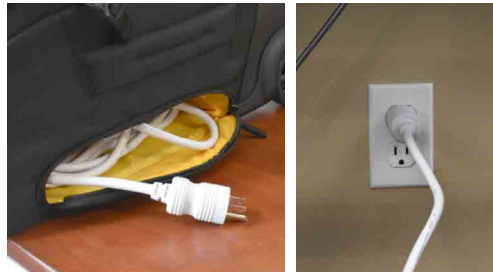


B Remove the camera cover on the TrackitCam and position the camera to face the patient



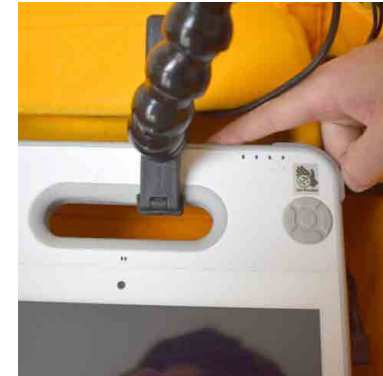
C Plug into electrical outlet

On the right side of the case, unzip to locate the white power cord and plug into an electrical outlet.



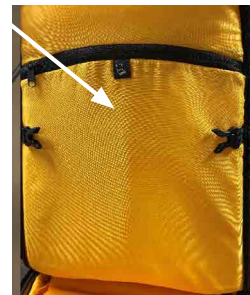
E Turn on the computer

Turn on the tablet using the power button on the top right



D Plug USB Mouse and Keyboard to USB Hub

Remove the USB Mouse and Keyboard from zipper pouch on the hood of the travel case and plug them into the USB hub.



F Turn on the amplifier

Turn on the amplifier and connect it via the acquisition software

